

Royal Exchange Hotel



Sculpture Symposium



Mad Max Replica, Silverton



Mining Head Frame

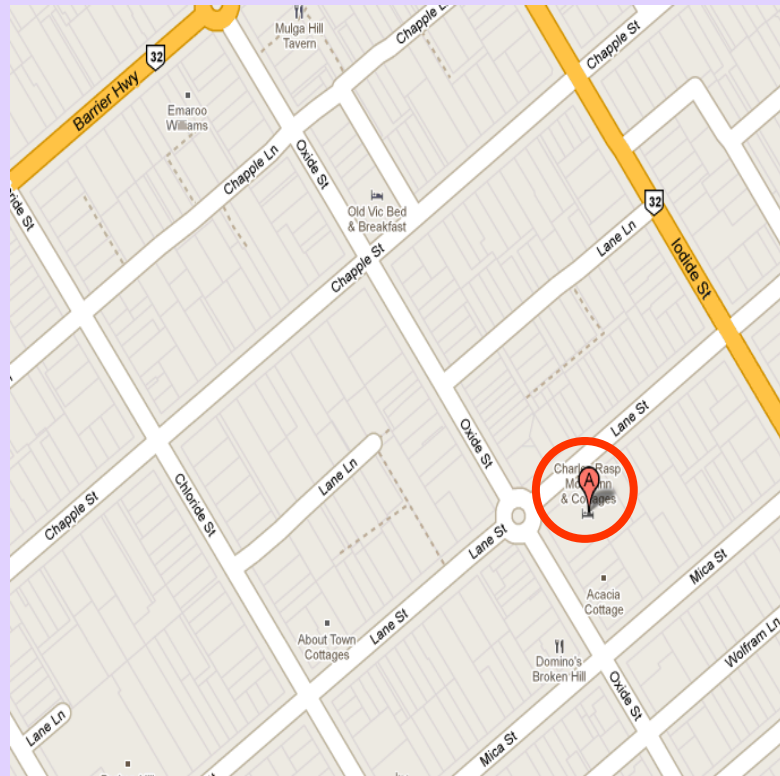


Post Office



Image Source: flicker.com.au

## How to get there



**158 Oxide Street  
Broken Hill NSW 2880**

**Phone: 08 8088 1988  
Fax: 08 8088 4633**

[reservations@charlesraspmotorinn.com.au](mailto:reservations@charlesraspmotorinn.com.au)

# Charles Rasp

## MOTOR INN & COTTAGES

*for Comfort and Service*



**158 Oxide Street  
Broken Hill NSW 2880**

**Phone: 08 8088 1988  
Fax: 08 8088 4633**

[reservations@charlesraspmotorinn.com.au](mailto:reservations@charlesraspmotorinn.com.au)

## Facilities

### Motel Facilities:

- BBQ Area
- Outdoor Swimming Pool
- Outdoor Spa
- Austar TV
- Room Service (Breakfast)
- Wireless Internet Access
- Disabled Access Rooms
- Dry Cleaning Service
- Self Service Laundry Facilities
- Lunch/Dinner Charge Backs
- Secure On-site Parking



### Room Facilities:

- Heating and Cooling
- Austar TV
- DVD Player (Executive Rooms Only)
- Coffee/Tea Making Facilities
- Direct Dial Telephone
- Electric Blankets
- Mini Bar
- Ironing Facilities
- Bath (Executive Rooms Only)

**Non-Smoking Property**

## Accommodation

Check-in: 1:00 pm— Check-out: 10:00 am

### Room Types

**VIP Suite: King bed, DB Sofa, King Spa, Twin shower**

**Executive Spa: Queen Bed, DB Sofa, Spa, Separate Shower**

**Executive: Queen, DB Sofa, Single, Bath, Shower**

**Standard: Queen Bed, Single Bed, Shower**

### Family Suites:

**Executive Family —2 bedrooms (1 Queen, 3 Single); Bath & Shower**

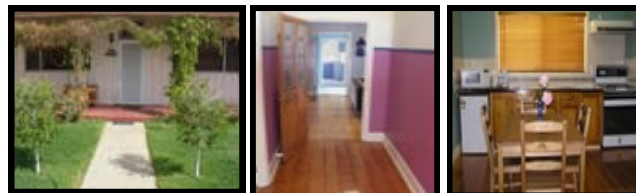
**Standard Family —2 bedrooms (1 Queen, 3 Single); shower**

**Open Family— 1 Queen, 2 single beds; shower**

## Self-Contained Cottages

Ideal for family or groups with plenty of room to move. Our self-contained cottages offer home-away-from-home conveniences. Private and secure off-street parking. Close to CBD, Cafes & Restaurants.

- **Avoca Cottage**
- **Acacia Cottage**
- **Charles Rasp Cottage**



**Guaranteed Friendly Efficient Service**

## Things to see

- ◆ Famous Silvertown Hotel
- ◆ Sculpture Symposium
- ◆ The Living Desert
- ◆ Day Dream Mine (1882-1983)
- ◆ Art Galleries
- ◆ Menindee Lakes
- ◆ The Royal Flying Doctor Base
- ◆ Silvermint Gallery
- ◆ Bells Milk Bar
- ◆ Al Fresco style coffee shops/dining

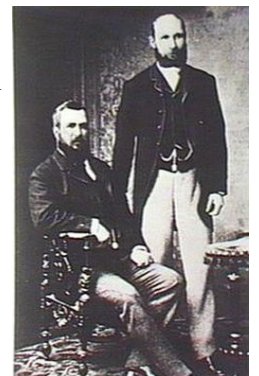
### Tourist Information Centre

Cnr Blende & Bromide Street  
Business Hours: Open Daily 8:30 am —5:00 pm  
Phone: (08) 8080 3560

### About Charles Rasp

Rasp worked as a station hand throughout Victoria, eventually ending up at Mt Gipps station in the Barrier Ranges, where Mr George McCulloch employed him as a boundary rider.

In 1883 he pegged a claim on a hill with an unusual shape, with a syndicate of seven. In order to finance more work on the claim, the syndicate split their shares, it then became a syndicate of fourteen. The Broken Hill Proprietary Company was formed on 16th July 1885. The mine was the worlds largest silver, lead & zinc mine and BHP became a global mineral resource company



Charles Rasp standing, George McCulloch sitting;  
Image Source: State Library of South Australia.